

Windows Vista wireless (WPA) setup - Detailed

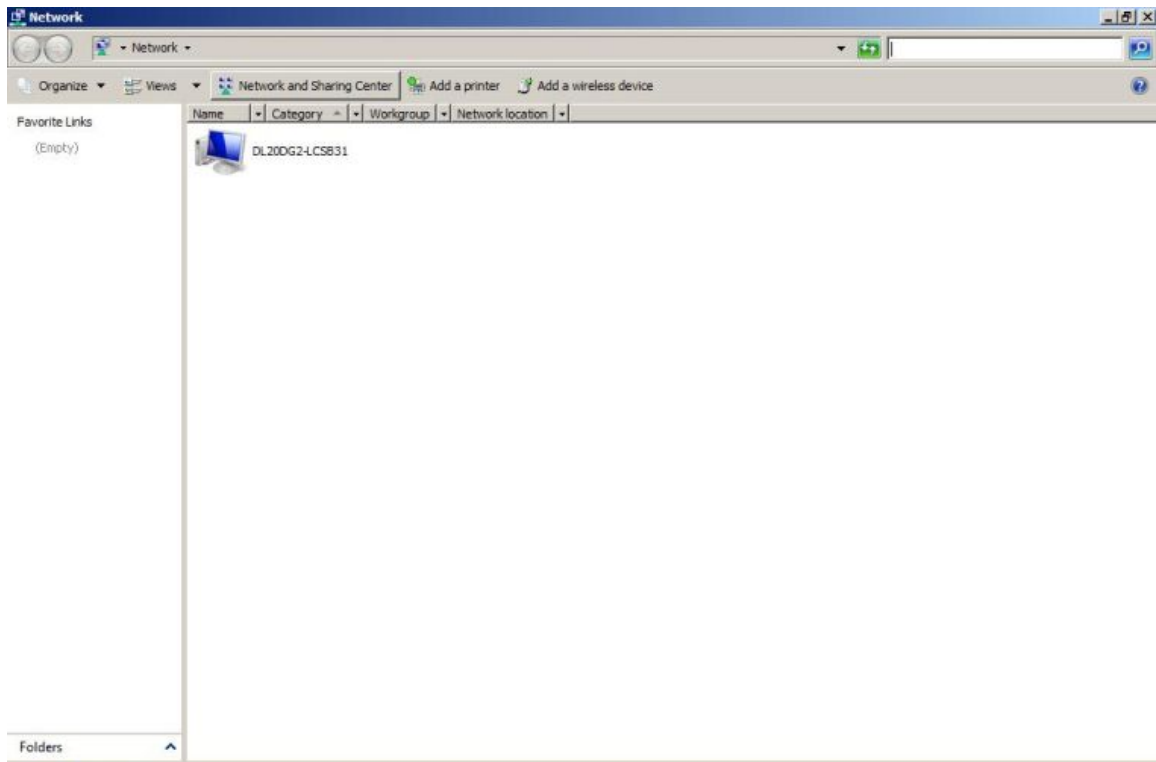
Wireless 802.1x Authentication - Windows Vista

Accessing and Configuring 802.1x Authentication for Windows Vista

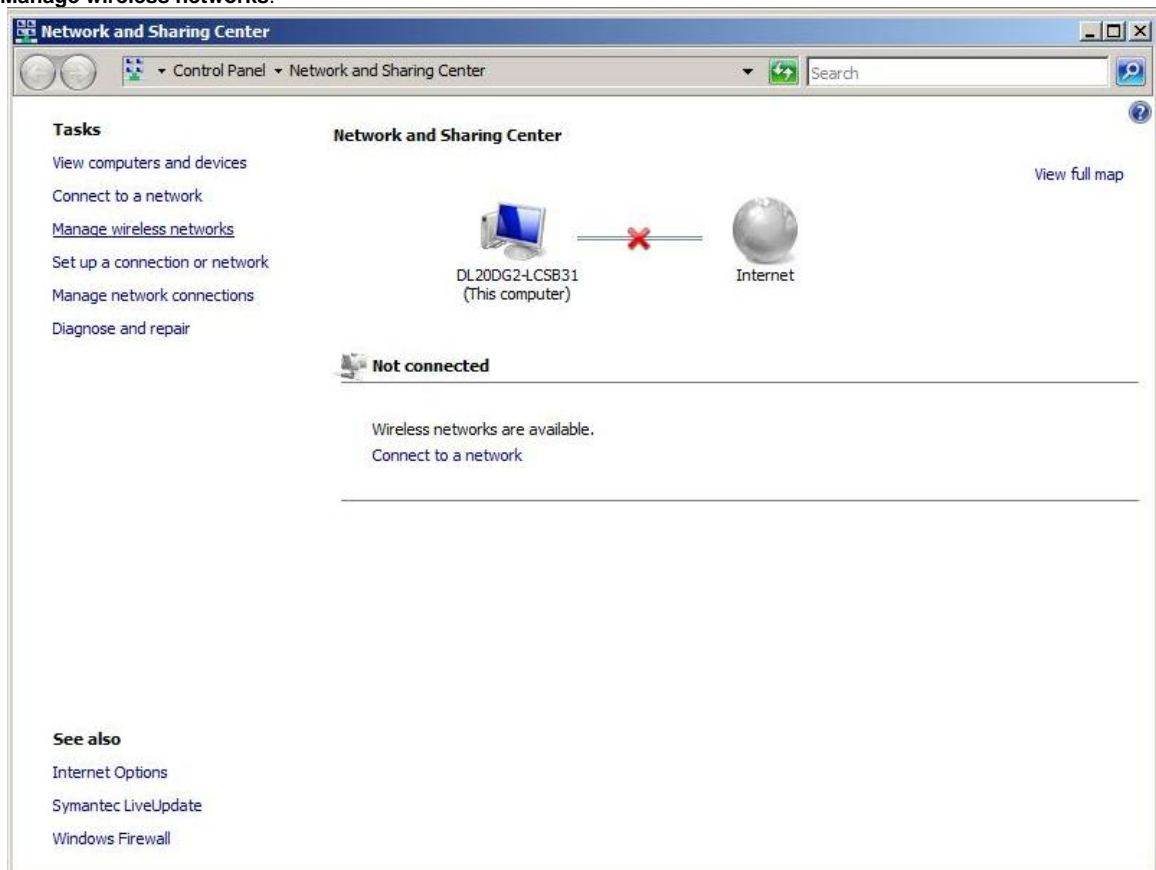
1. Open the Start Menu and select **Network**.



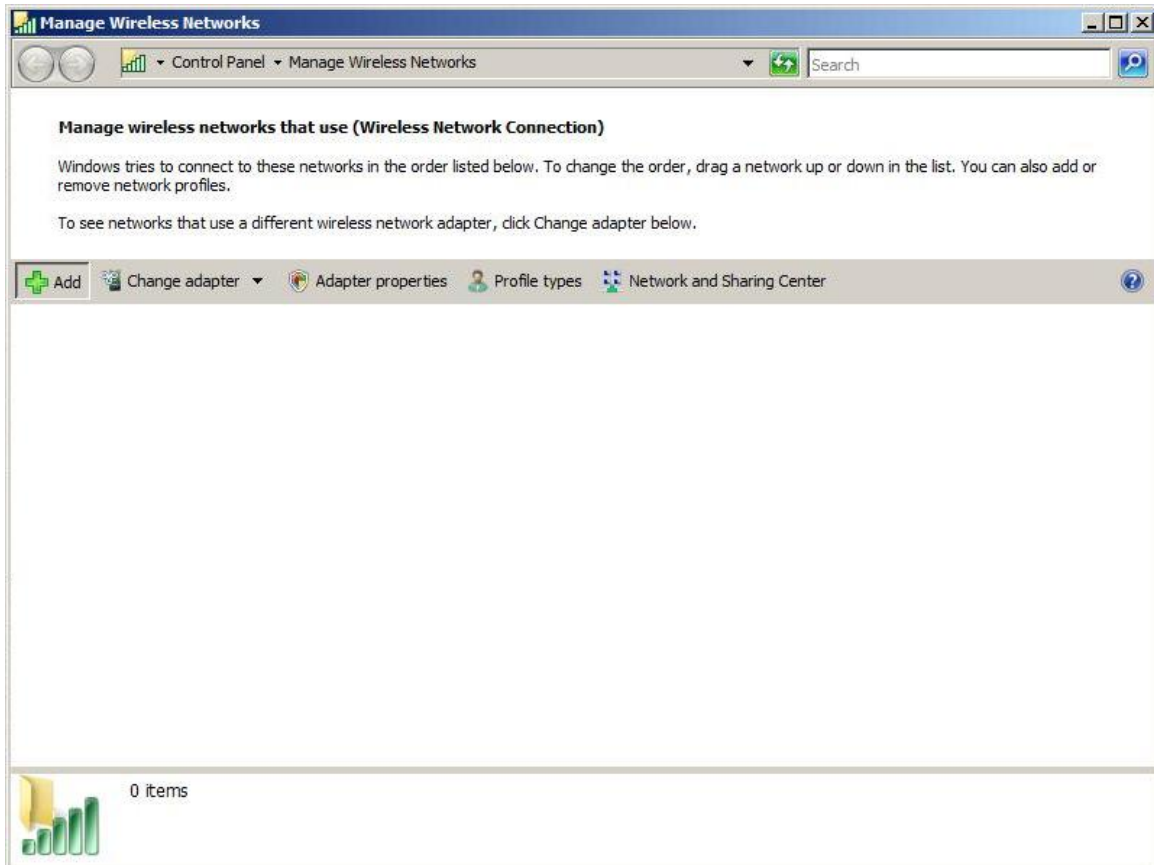
2. Select **Network and Sharing Center**.



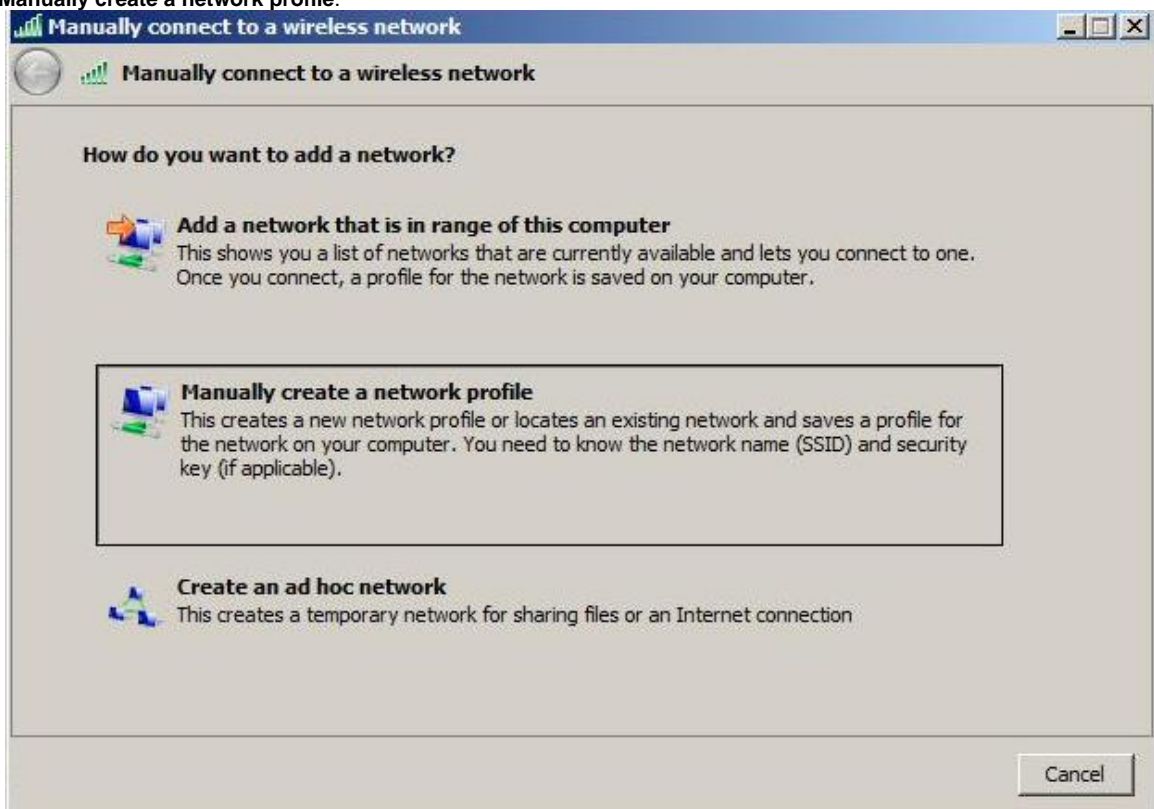
3. Select **Manage wireless networks**.



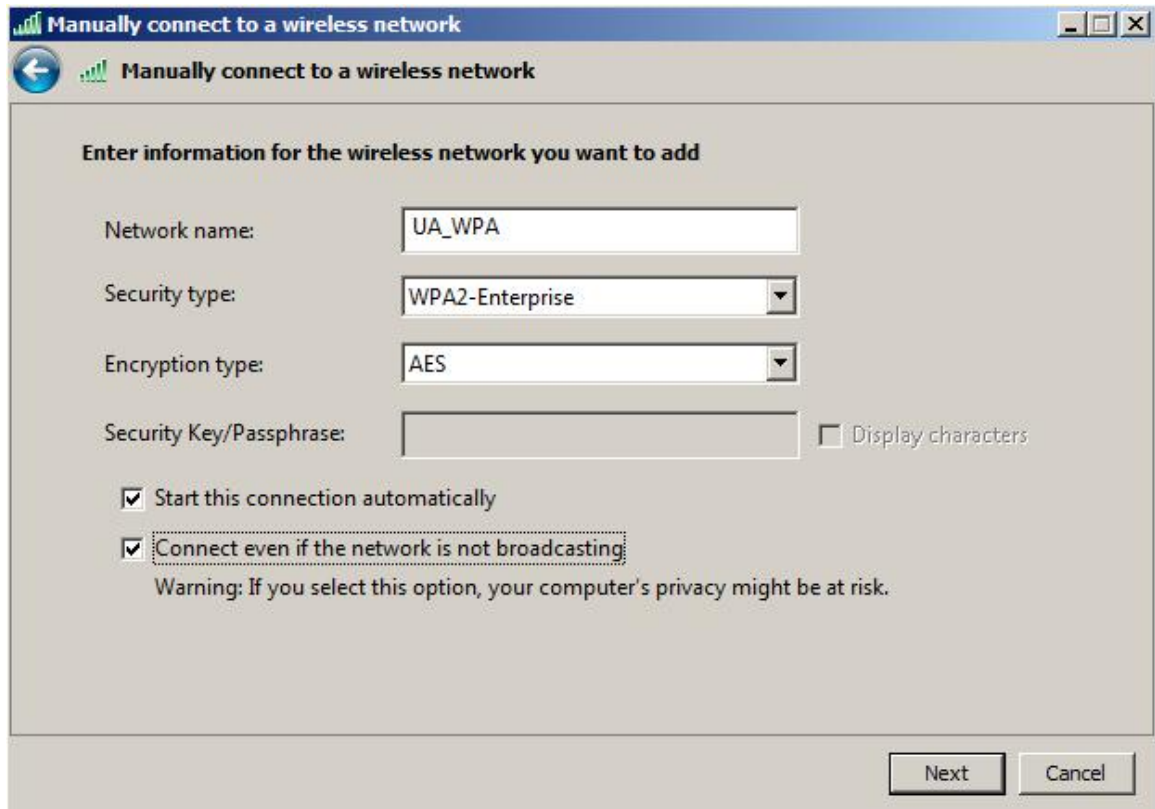
4. Select **Add**.



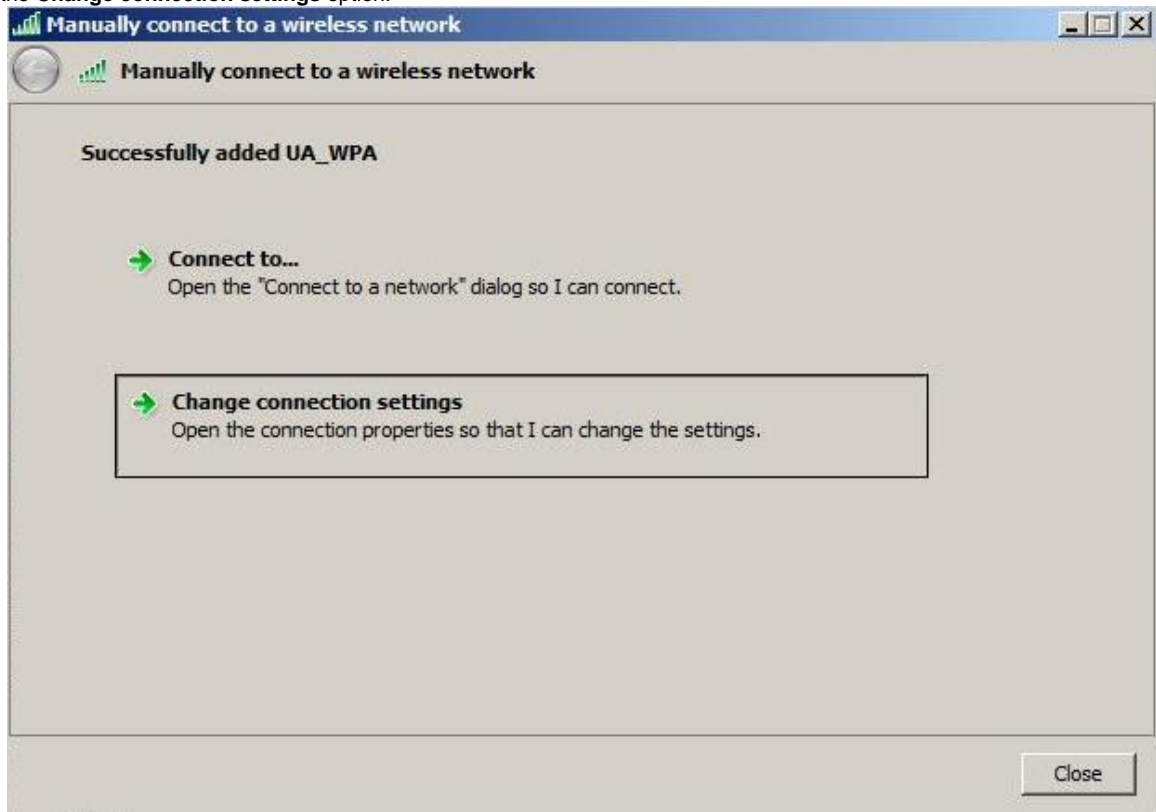
5. Select **Manually create a network profile**.



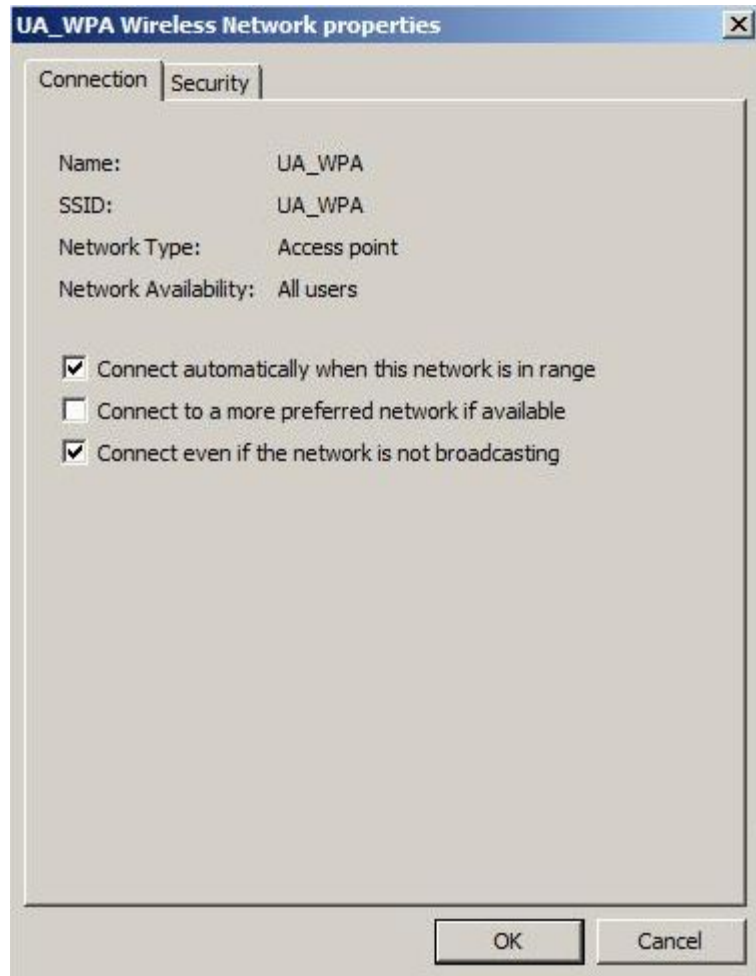
6. Enter UA_WPA (case sensitive) for Network Name, WPA2-Enterprise for Security type, and AES for Encryption type. Both boxes should be checked, then select Next.
- **NOTE:** If WPA-Enterprise is not available in the Security type field, your wireless card is not supported or your card might require a firmware/driver update. Check with your card/PC manufacturer.



7. Select the **Change connection settings** option.



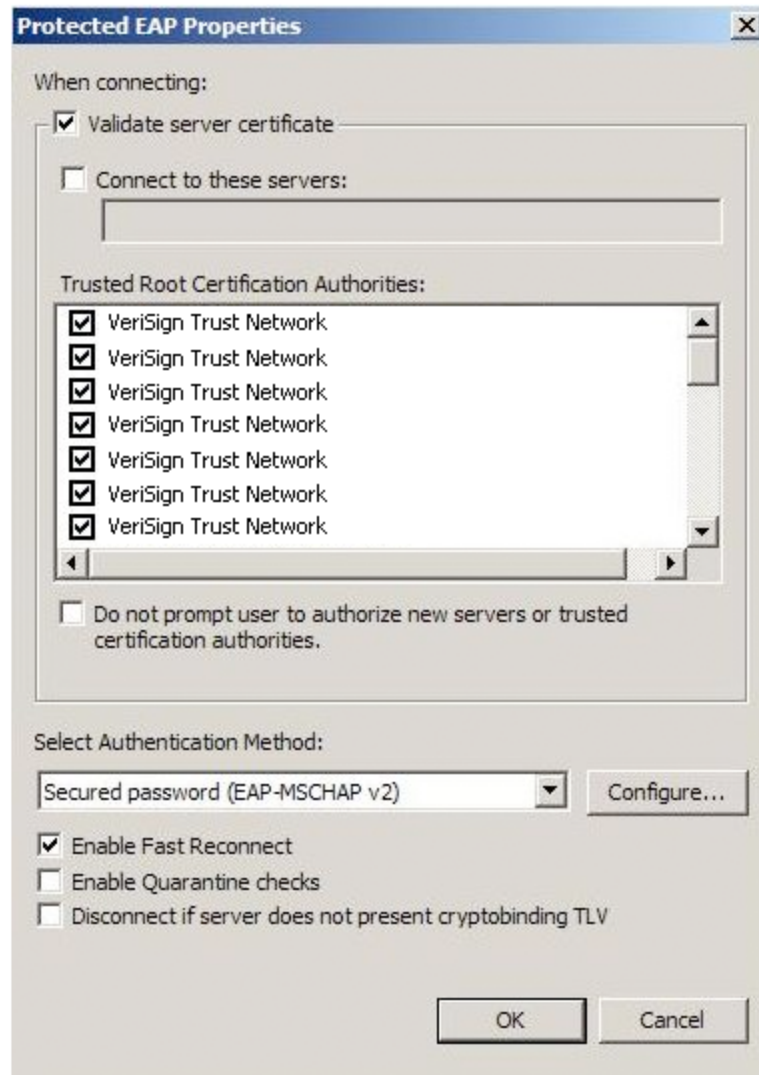
8. Make sure the boxes are checked accordingly and then select the **Security** tab.



9. Select **Settings..**



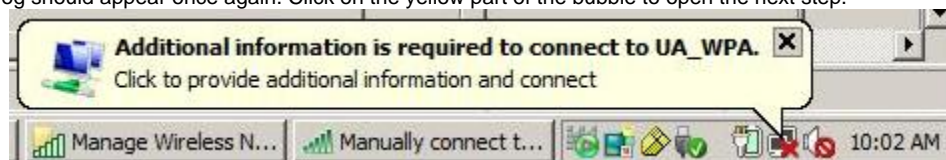
10. Ensure the **Validate server certificate** box is checked. Place a check in the box for **ALL VeriSign Trust Network** instances in the Trusted Root Certificate Authorities list. Make sure **Enable Fast Reconnect** is checked, then select **Configure...**



11. Uncheck the box for *Automatically use my Windows...*, then, click OK three times to close all three windows.



12. The following dialog should appear once again. Click on the yellow part of the bubble to open the next step.



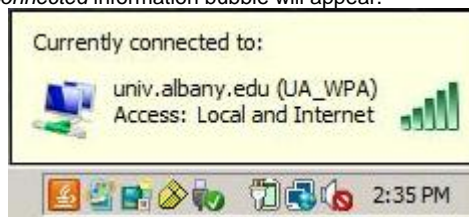
13. Enter your NetID and UNIX password and then select OK. Leave the Logon domain field blank.



- 14. A bubble will appear in the lower right hand corner. Click on the yellow part of the bubble to open the next step.
- 15. Click OK.



- 16. The *Wireless Network Connection is now connected* information bubble will appear.



If the search results do not provide an answer to your question, please submit a [Service Desk Request](#)
